

How can social care evolve to support greater integration?



Andrea Sutcliffe, Chief Inspector Adult Social Care

Cambridge Health Network

21 July 2015

The wrong question!

Assumes social care:

- Is the problem
- Only exists to support the NHS

Instead:

- How can health and social care work together to deliver person-centred co-ordinated care that people using services have every right to expect?



Breaking news!!

People do not live their lives in silos



What do our mums want from health and social care?

**Responsive to
people's needs**

Effective

Safe

Well-led

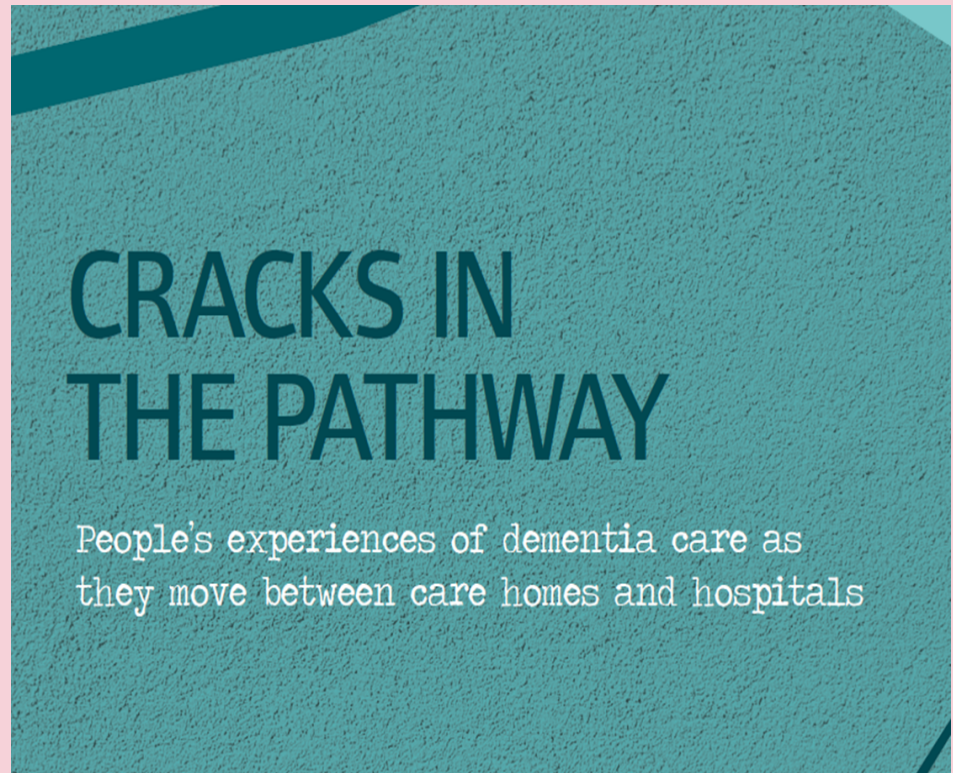
Caring



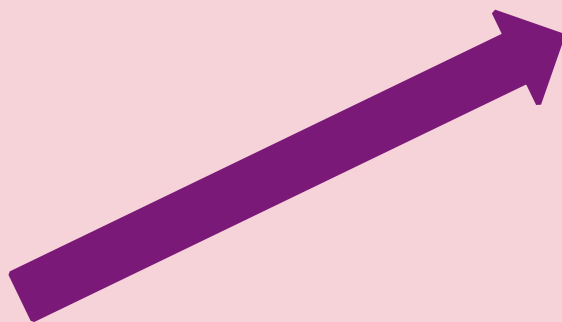
Services to work together for them

It's not happening

- Information isn't shared
- Poor communication
- Lack of support and leadership
- Artificial boundaries
- Mutual antipathy



What needs to change?



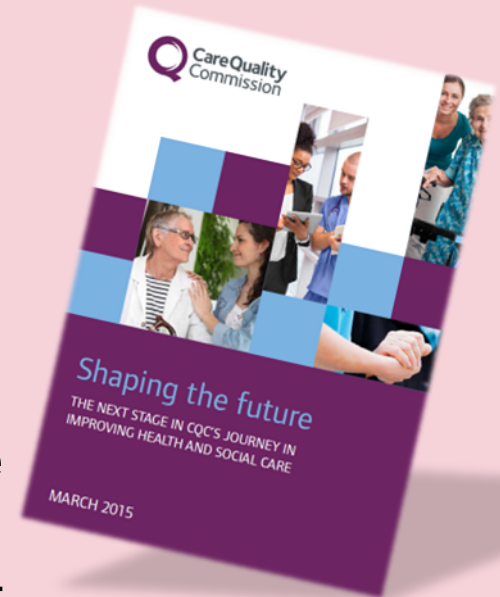
How?

- It's hard work!
- Use what works
- Be inspired by others
- Listen to people
- Believe you can



Regulation: facilitator not a barrier

- Focus on person-centred co-ordinated care
- Set expectations for services to work together
- Respond flexibly to new models of care
- Share good practice & shine a spotlight on problems through thematic reviews
- Consider experience of people in localities



It's not about us...



...and
our
silos –
it is
about
people

Thank you



www.cqc.org.uk

enquiries@cqc.org.uk

 [@CareQualityComm](https://twitter.com/CareQualityComm)

Andrea Sutcliffe

Chief Inspector of Adult Social Care

 [@CrouchEndTiger7](https://twitter.com/CrouchEndTiger7)