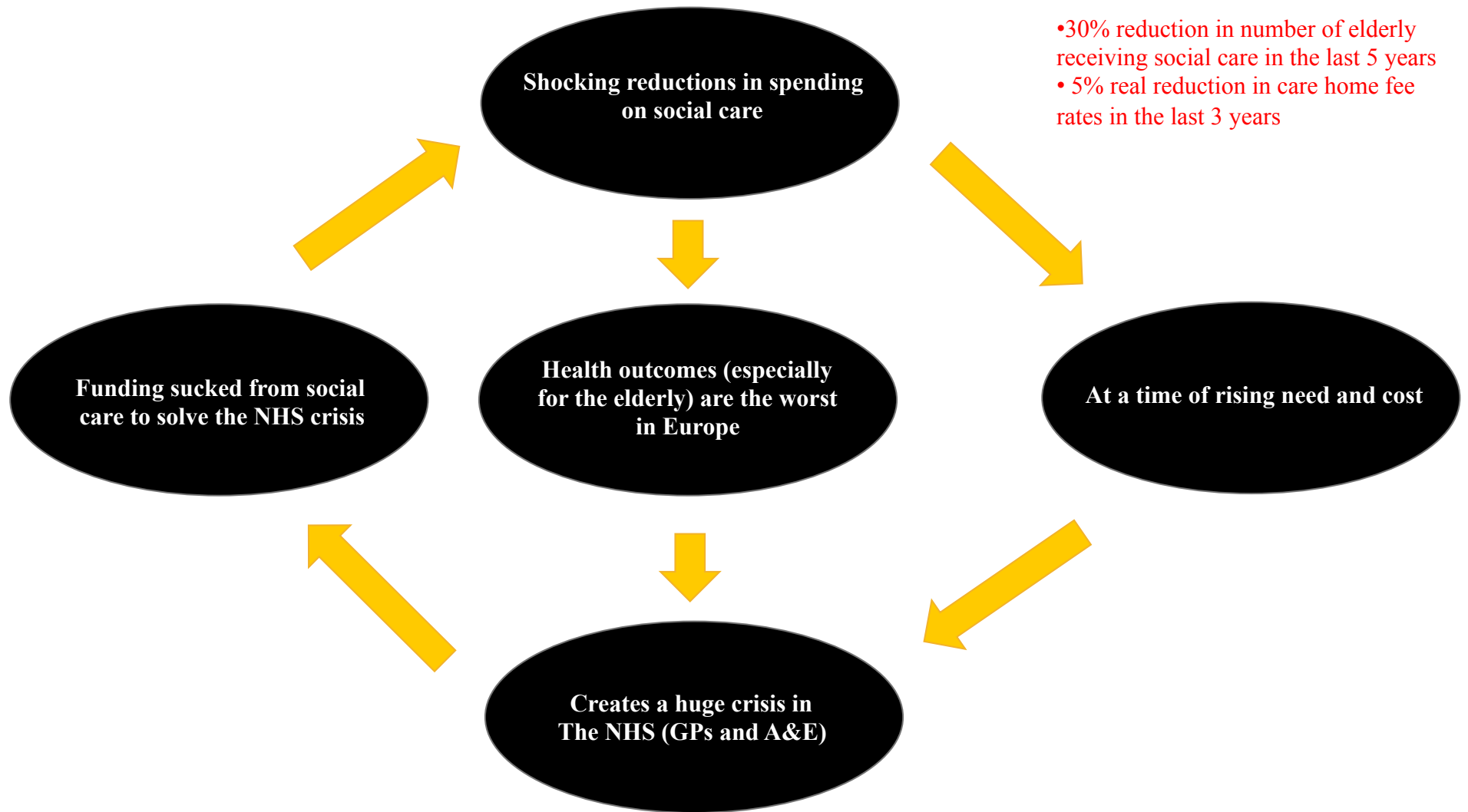


The Vicious Circle of a Broken Health and Social Care System

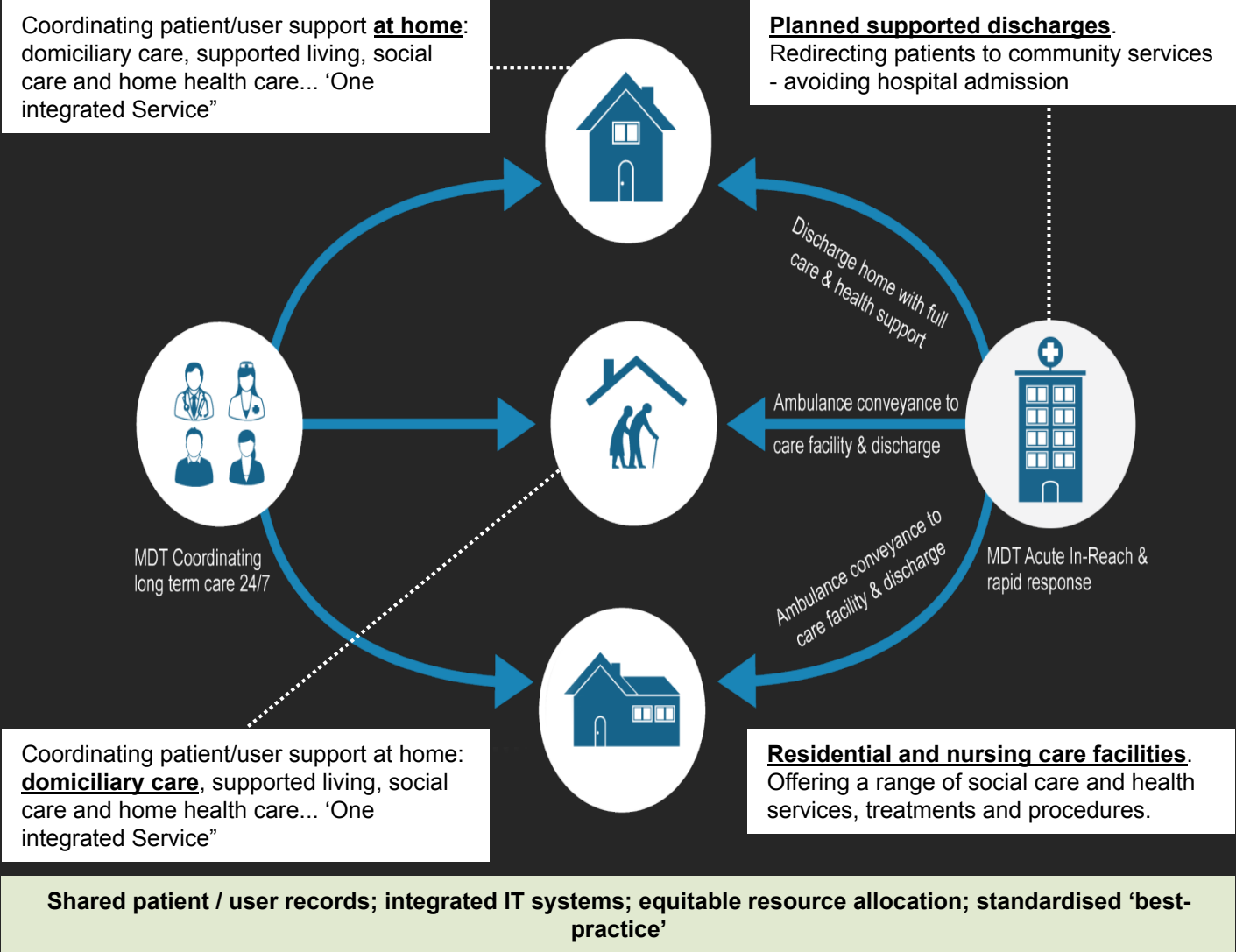


Integrated Care Delivered Across All Care Settings

The end-to-end management of the care needs of individuals, vulnerable 'high risk' cohorts and whole populations.

Whole person integrated assessments & care planning (covering major domains of social, cognitive and physical needs)

Robust and valid framework of outcomes and quality indicators. Joint funding case mix. Risk stratification



Care is coordinated and managed across all community care settings (including complex home healthcare & nursing)

Rapid response and reablement services with full step up and step down services. Treatments & outpatient services in community.

Acute in-reach service for admission avoidance and planned and supported discharge

Eight imperatives to achieve integrated care

- Merge health and social care, from scale-efficient health economies down to ministerial level.
- Merge the 'entitlement systems'.
- Introduce scale-efficient expert commissioning that wraps money around the individual ('better care fund' is not the answer).
- Support care packages that build an intermediate care sector (disband system resilience groups).
- Accelerate personal budgets.
- Create one regulator – CQC – and regulate for cycles of care.
- Mandate minimum fee rates for nursing homes and domiciliary care.
- Support a new intermediate nursing qualification in the community.